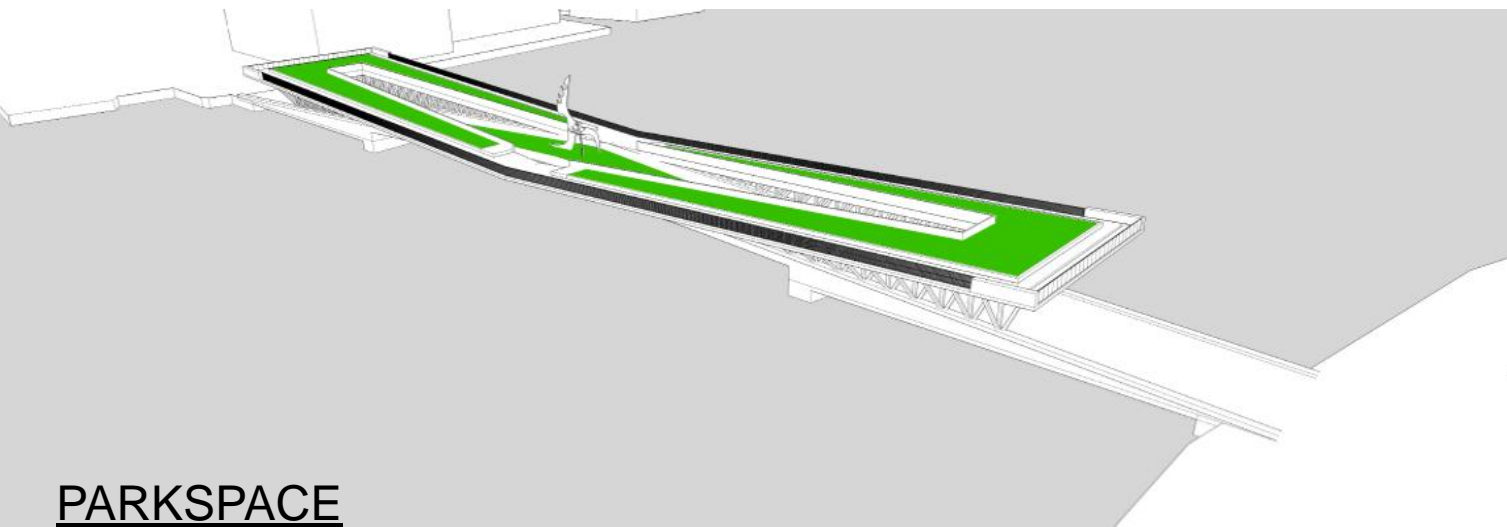
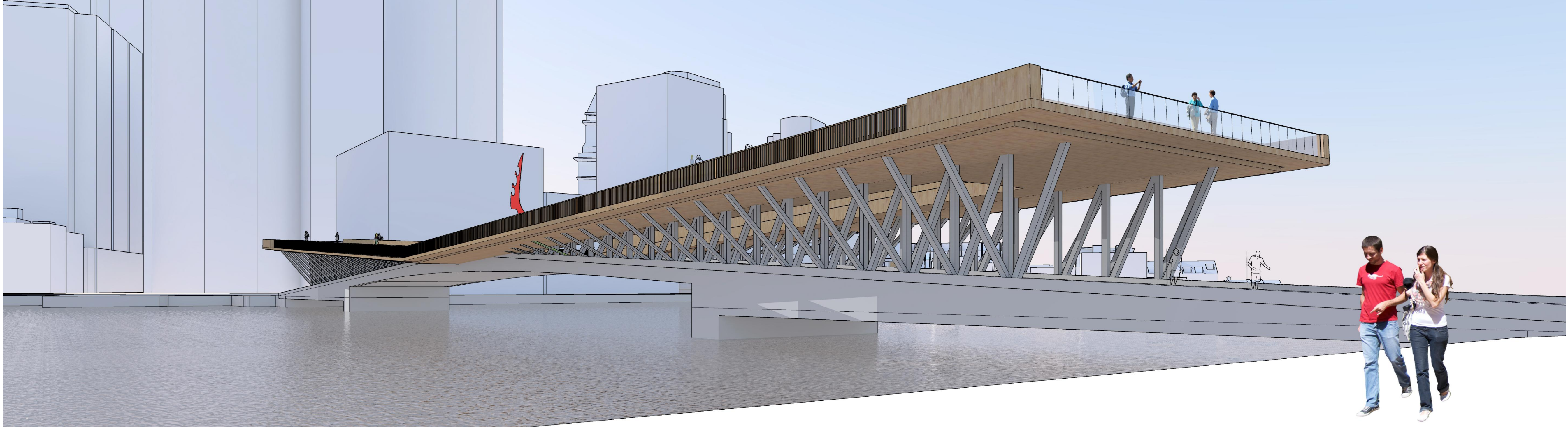


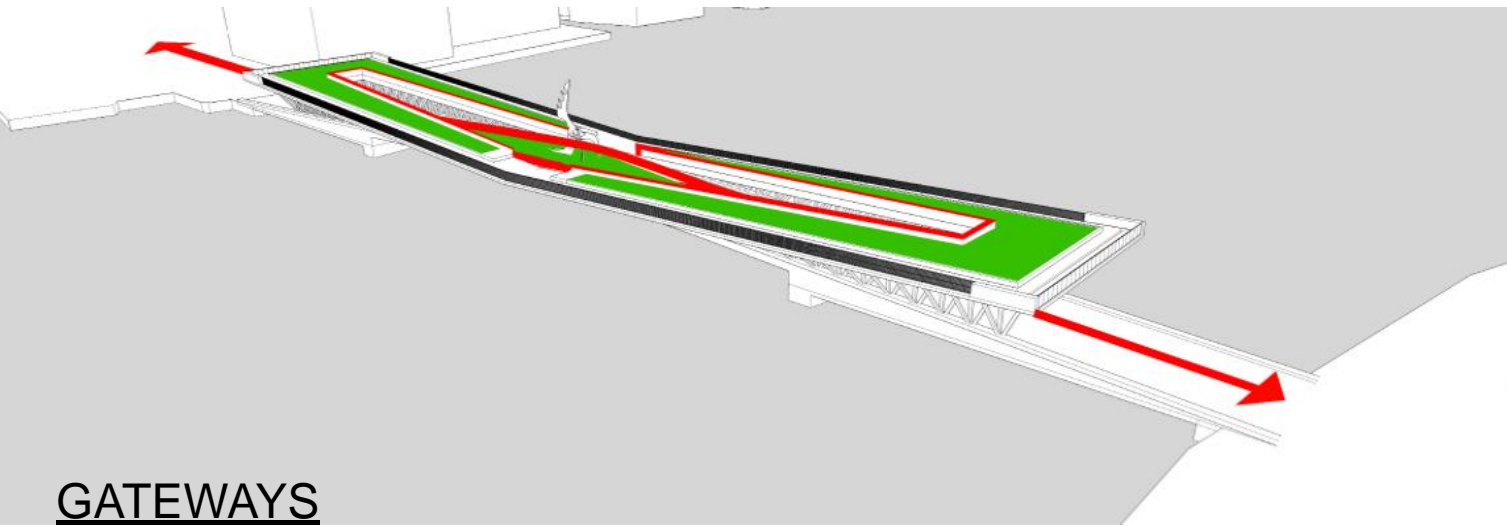
WOODEN HAMMOCK

The New Northern Avenue Bridge is imagined as a singular destination, a pedestrian parkway suspended over the water. Clad in wood, it is formed of sloping, lawn-covered planes - a place for strolling, picnicking, sunbathing. Elevated platforms to either end of the park are ideal for people-watching, overlooking the Rose Kennedy Greenway at the north, and the Barking Crab to the south.



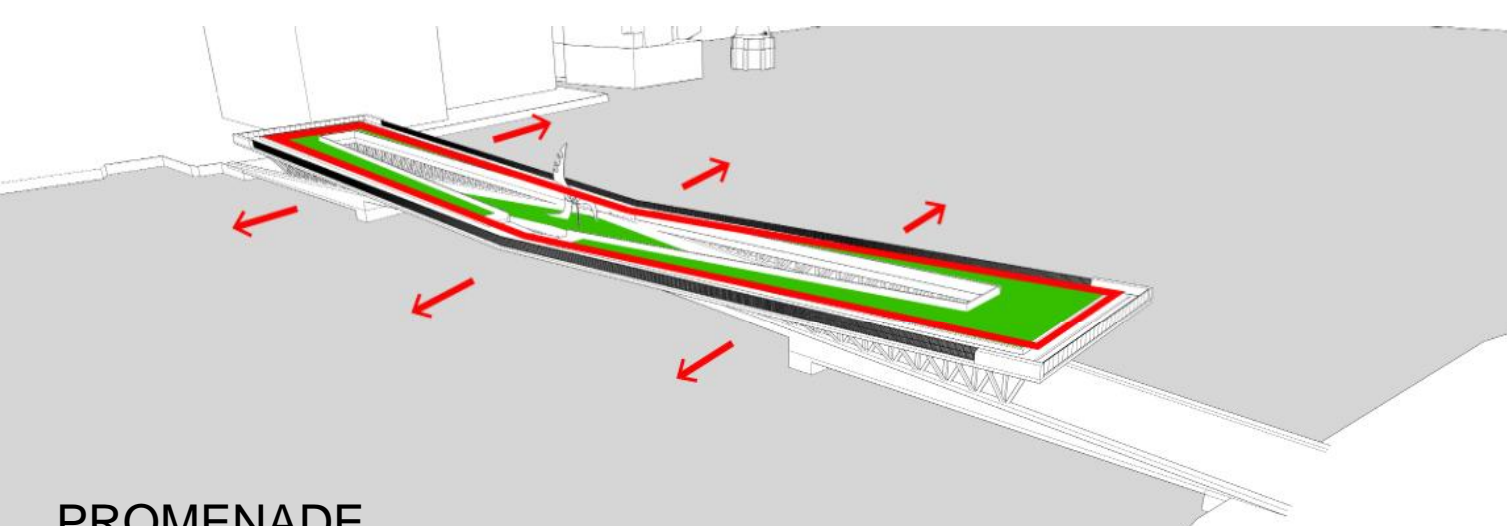
PARKSPACE

The new bridge is formed of sloping green lawns, a destination for urban recreation. It is imagined as an extension of the Rose Kennedy Greenway.



GATEWAYS

Slots in the park deck create sloped arches, defining entries to the Greenway at the north and the Seaport District to the south.



PROMENADE

Accessible ramps define a gently sloping circuit featuring panoramic views to downtown Boston, the Seaport District and Boston Harbor.

