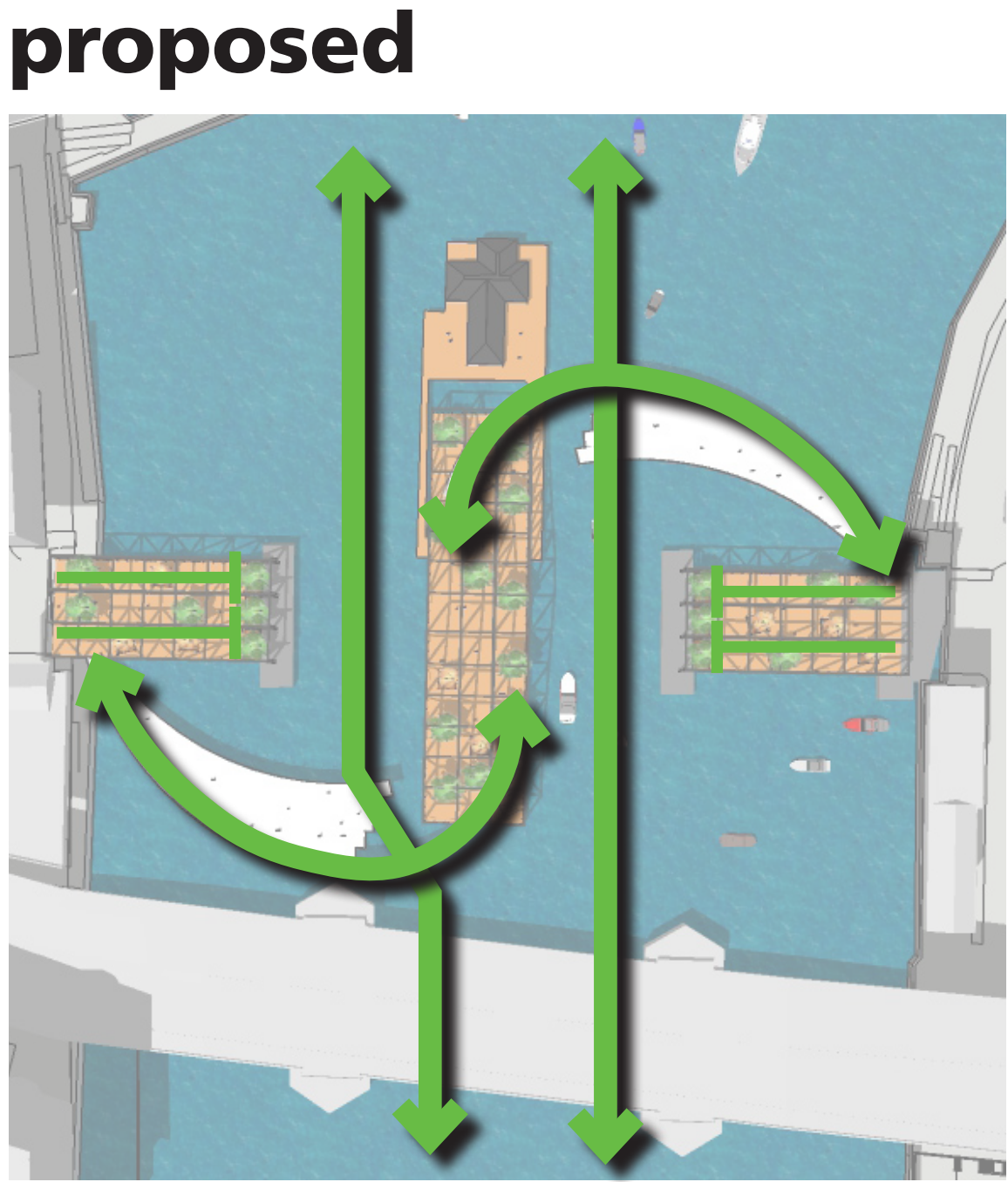
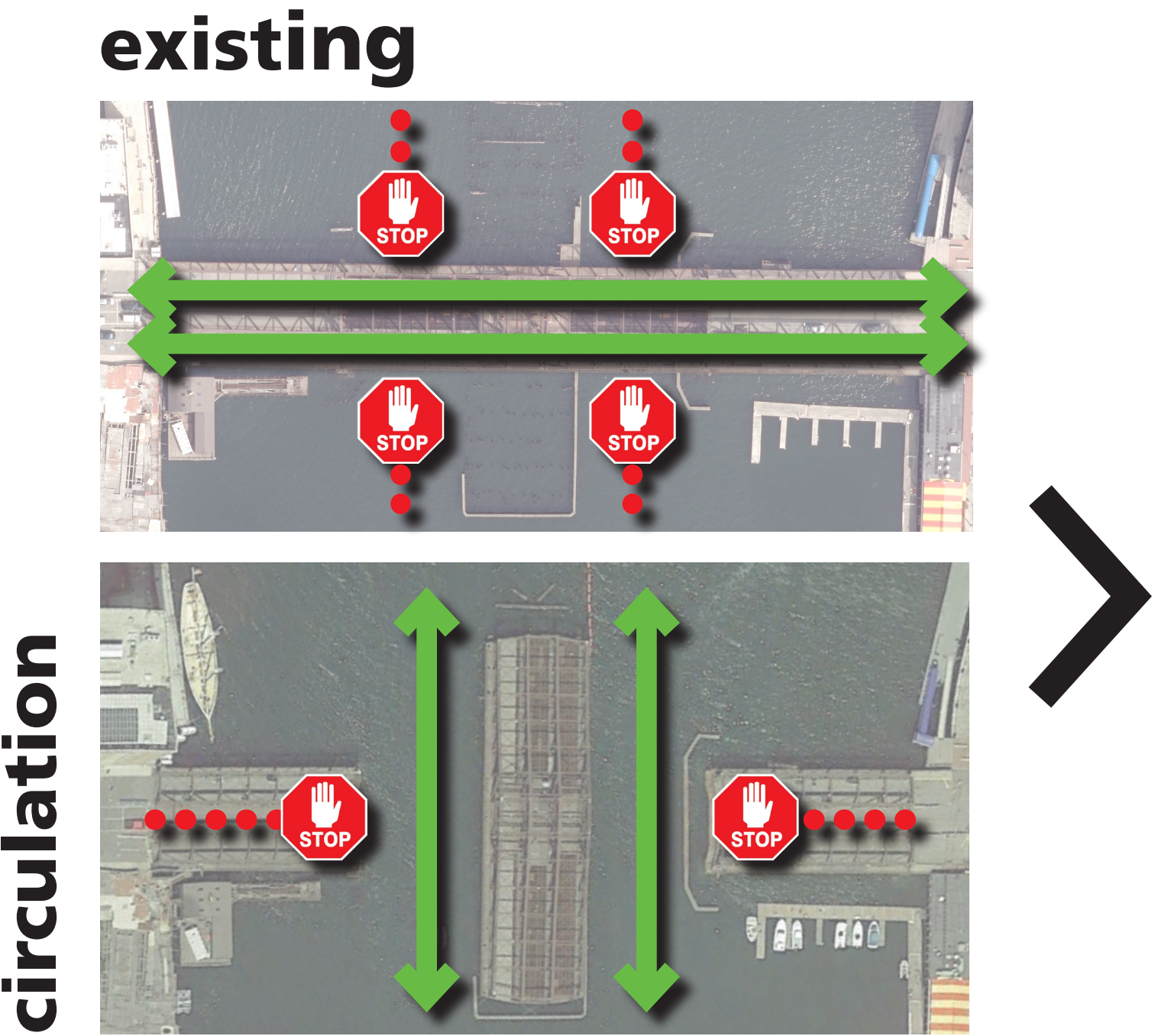


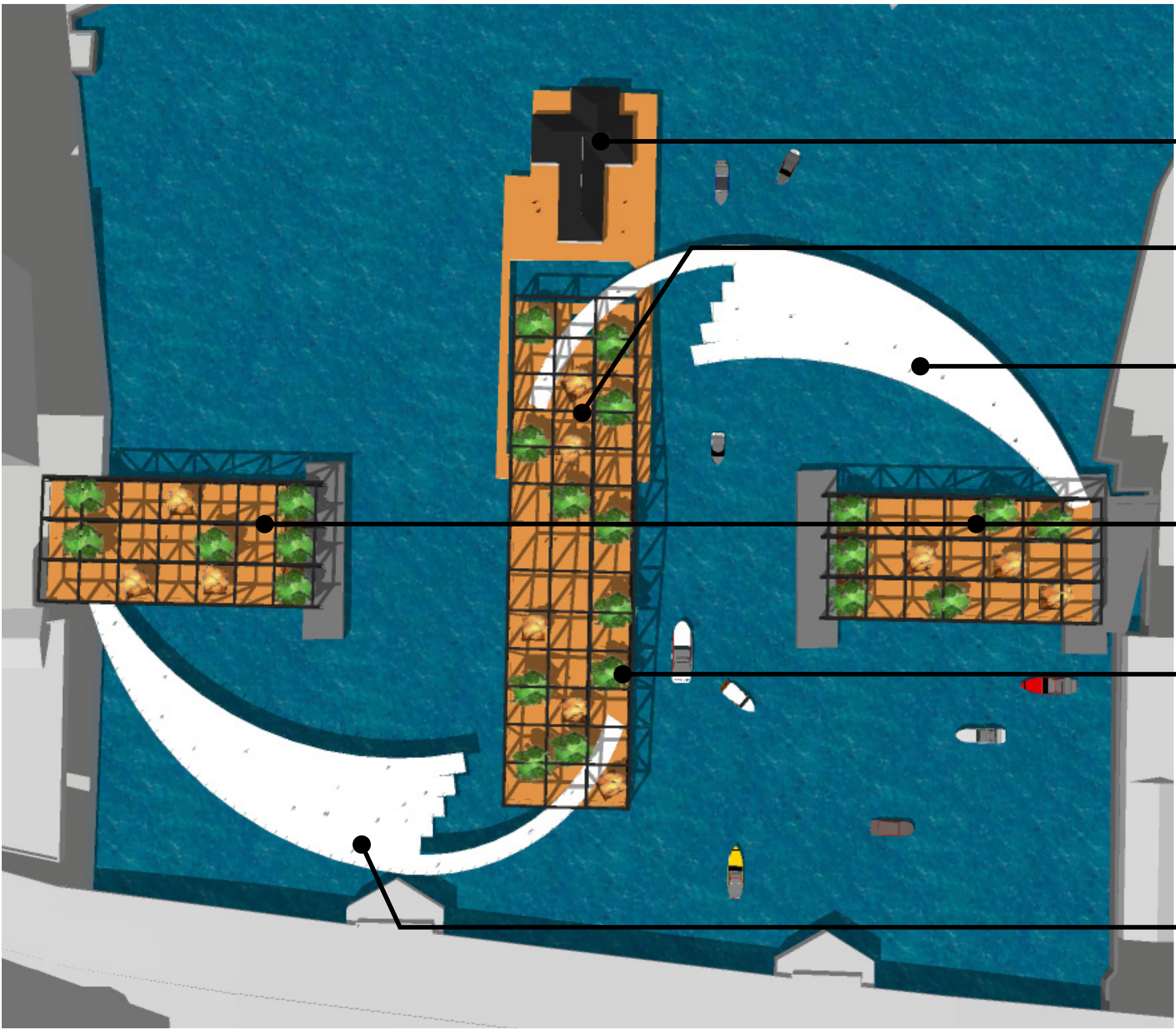
PIVOT POINT PARK



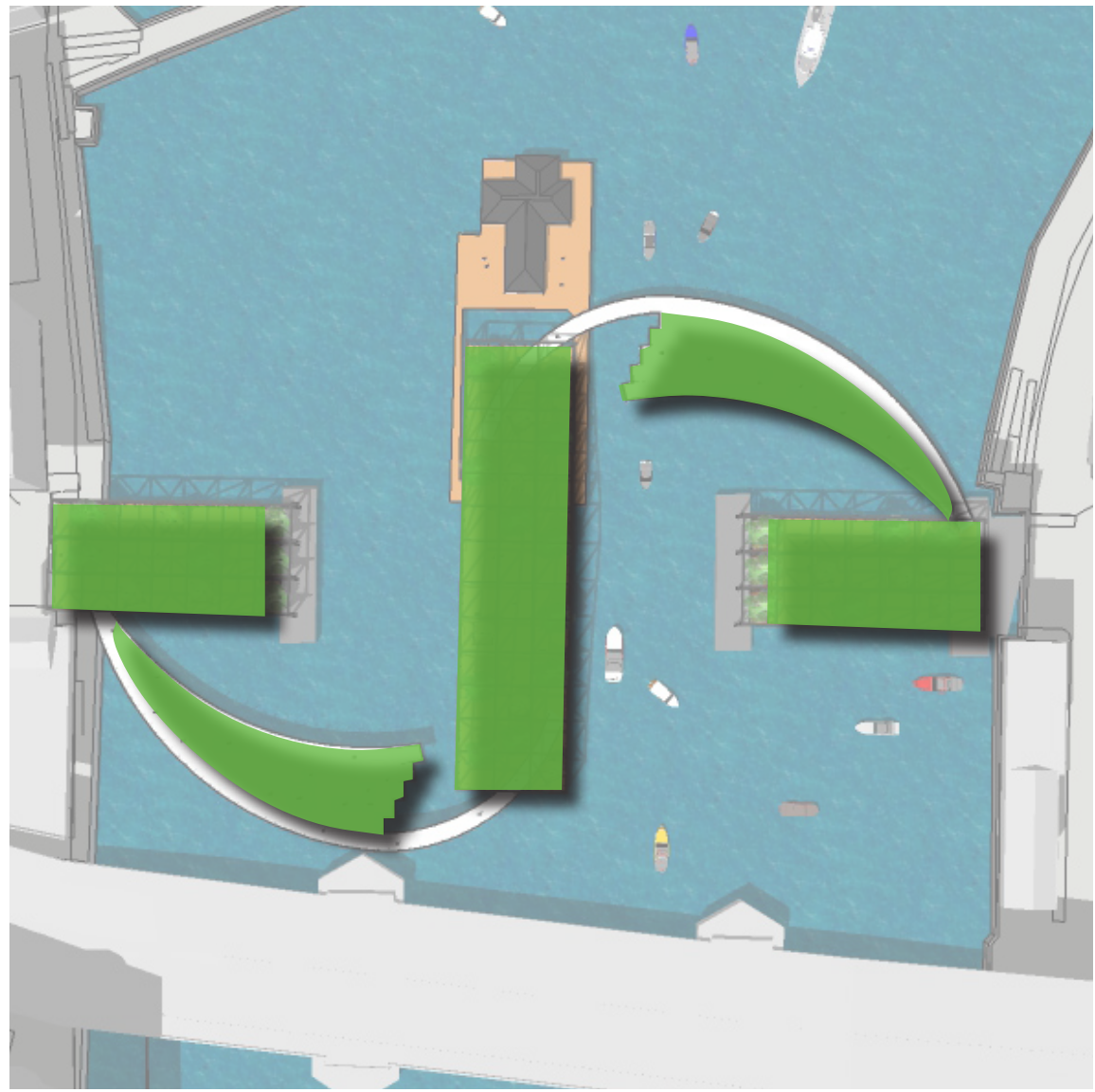
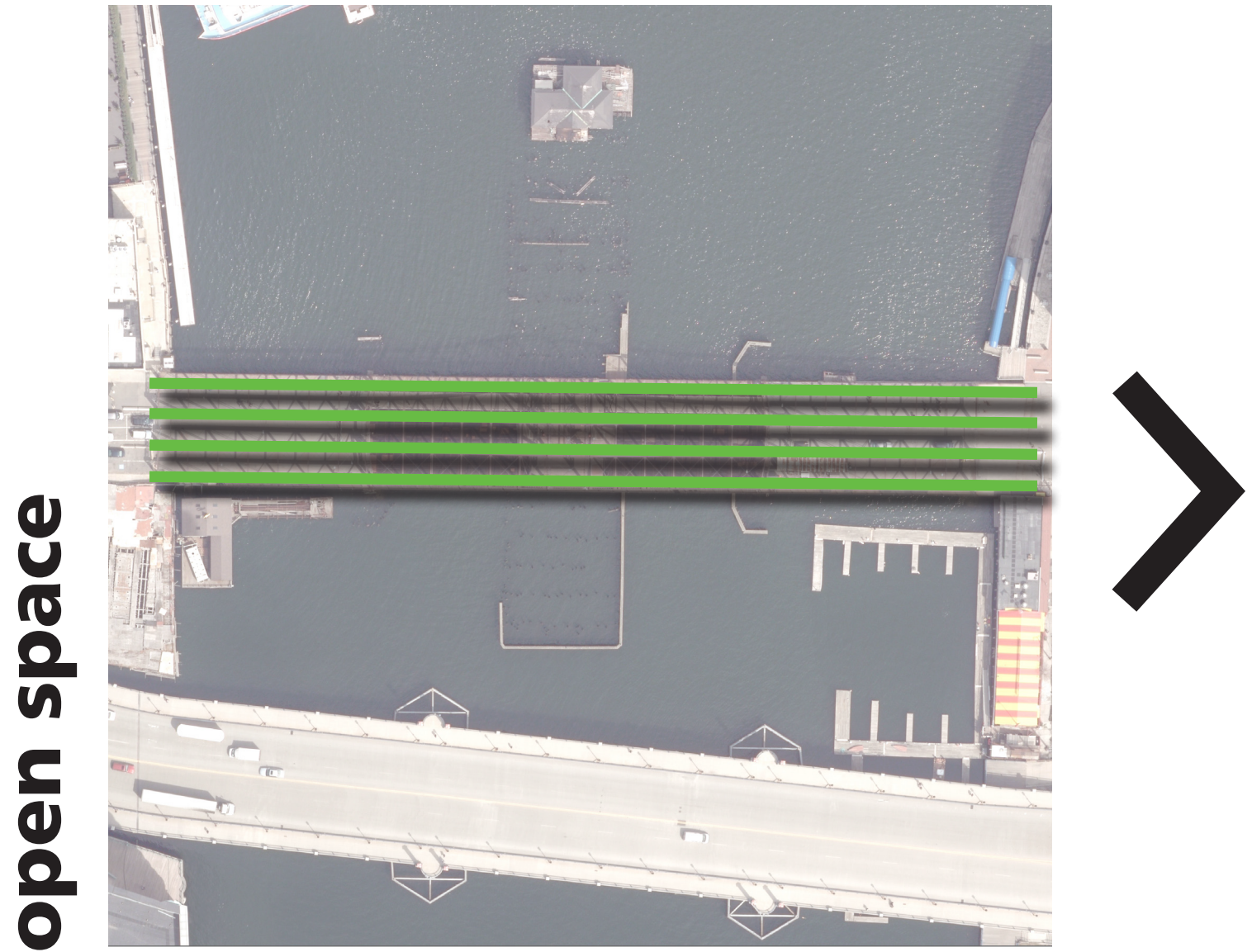
issue: the current configuration of the bridge only allows for one user group to use the space at a time.

opportunity: permanently rotate and reinforce the existing bridge and design and construct a new arching pedestrian bridge. this will allow boats to pass without restriction and provide pedestrians the ability to use the permanently rotated middle section as an urban plaza.

plan



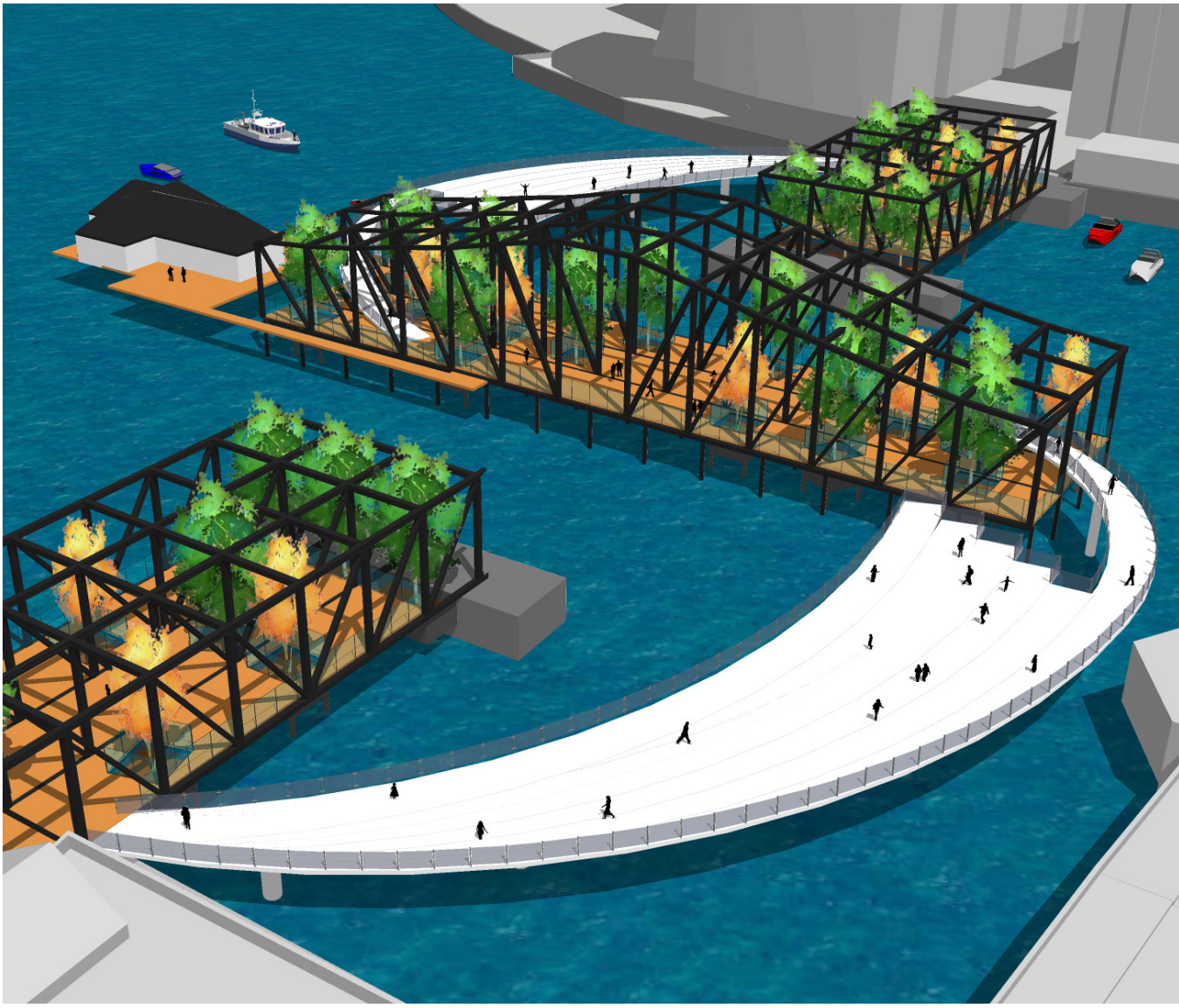
- rehabilitate and repurpose tender's house to educate public and create event space
- permanently rotated middle section
- new pedestrain bridges
- existing fence removal and new bridge decking to allow for unrestricted access
- bridge deck strategically cut to provide planter areas for self supported planted areas in varying sizes
- new pedestrain bridges to create simulatenous circulation for both boat and pedestrian traffic



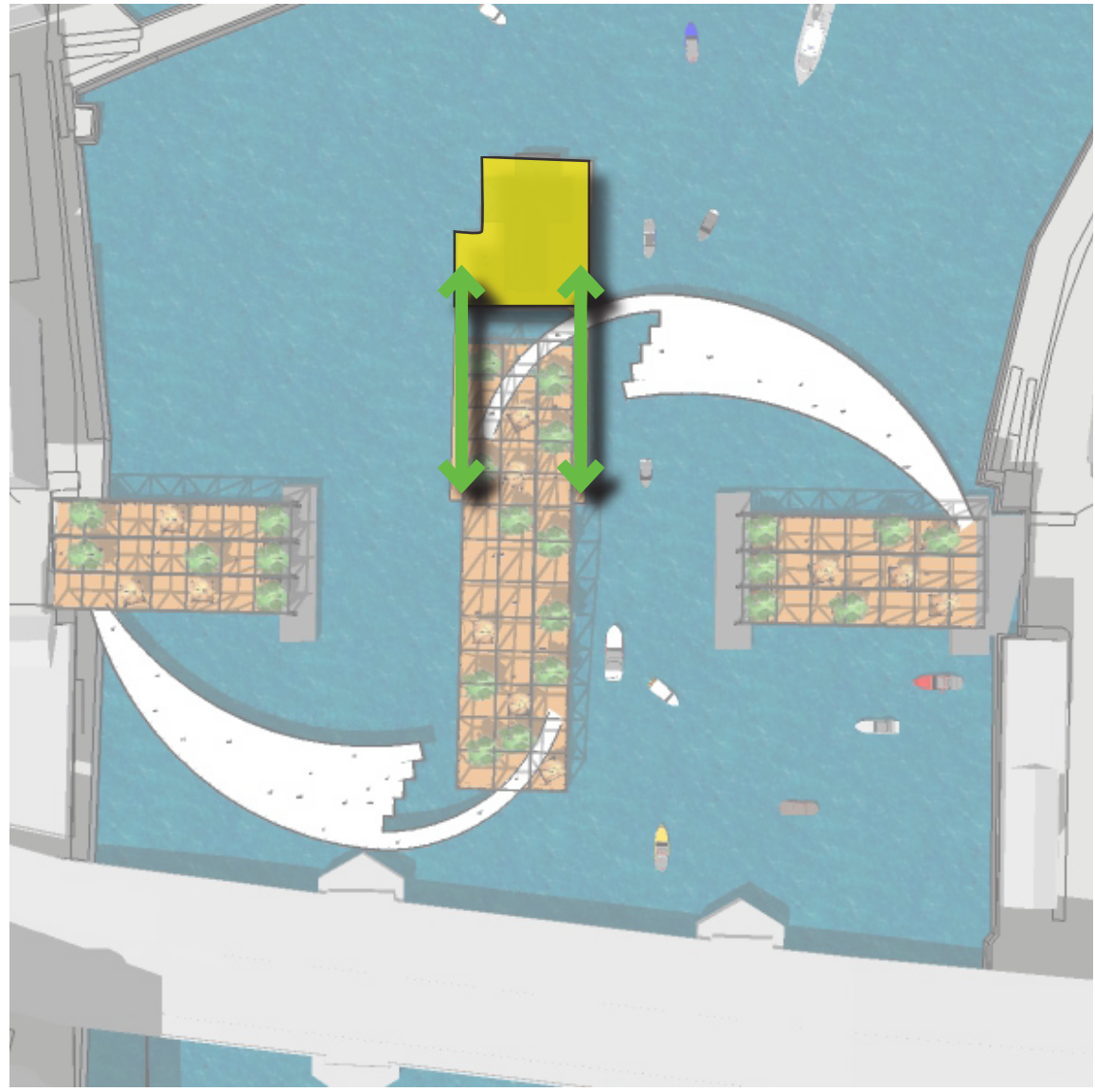
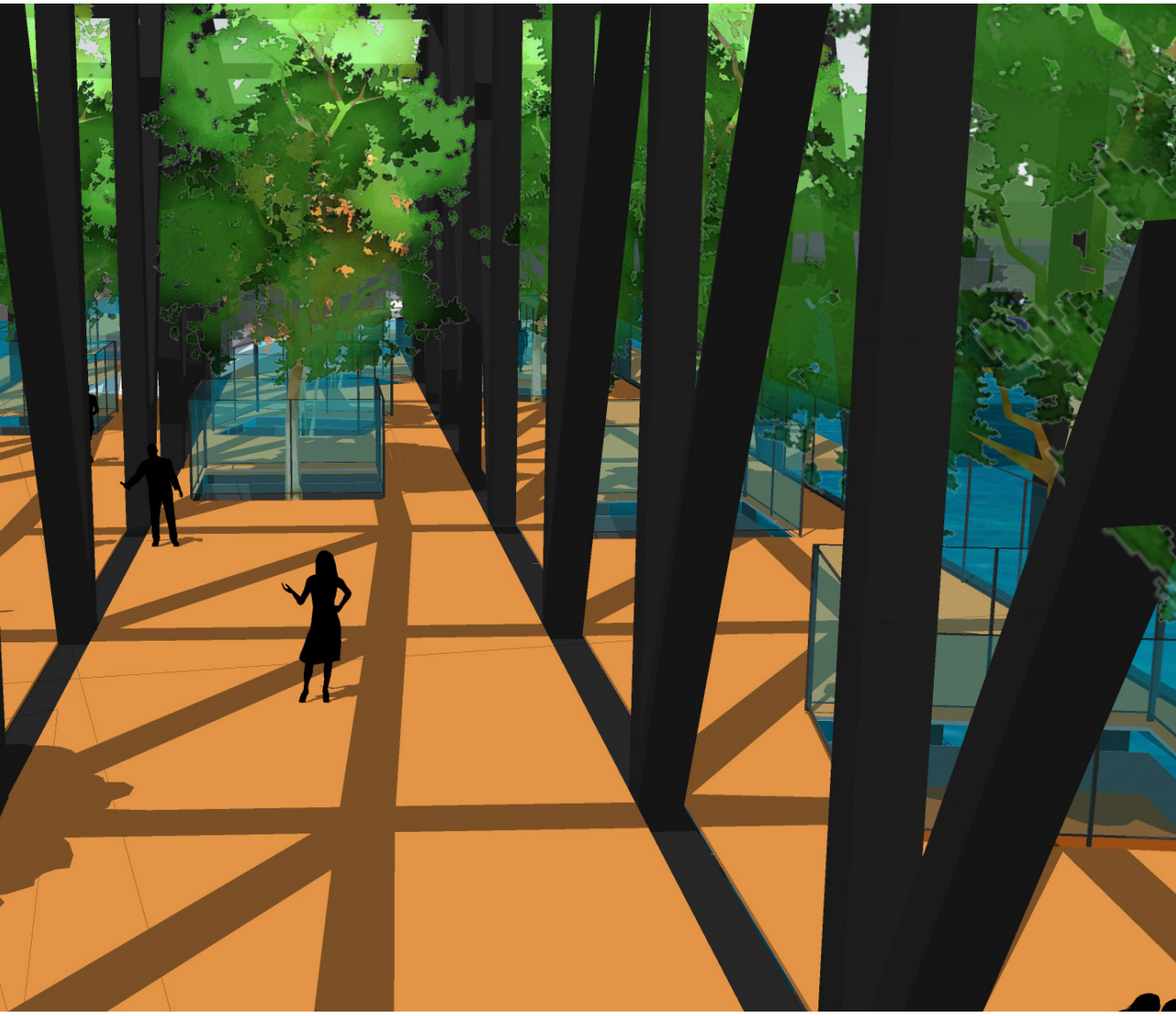
issue: the existing conditions and structure facilitates linear circulation. the fencing in the middle of the structure limits any use by the public

opportunity: rotation of the bridge provides unrestricted access to all portions of the existing bridge. the new bridges are designed as large urban plazas that create new circulation paths.

view a



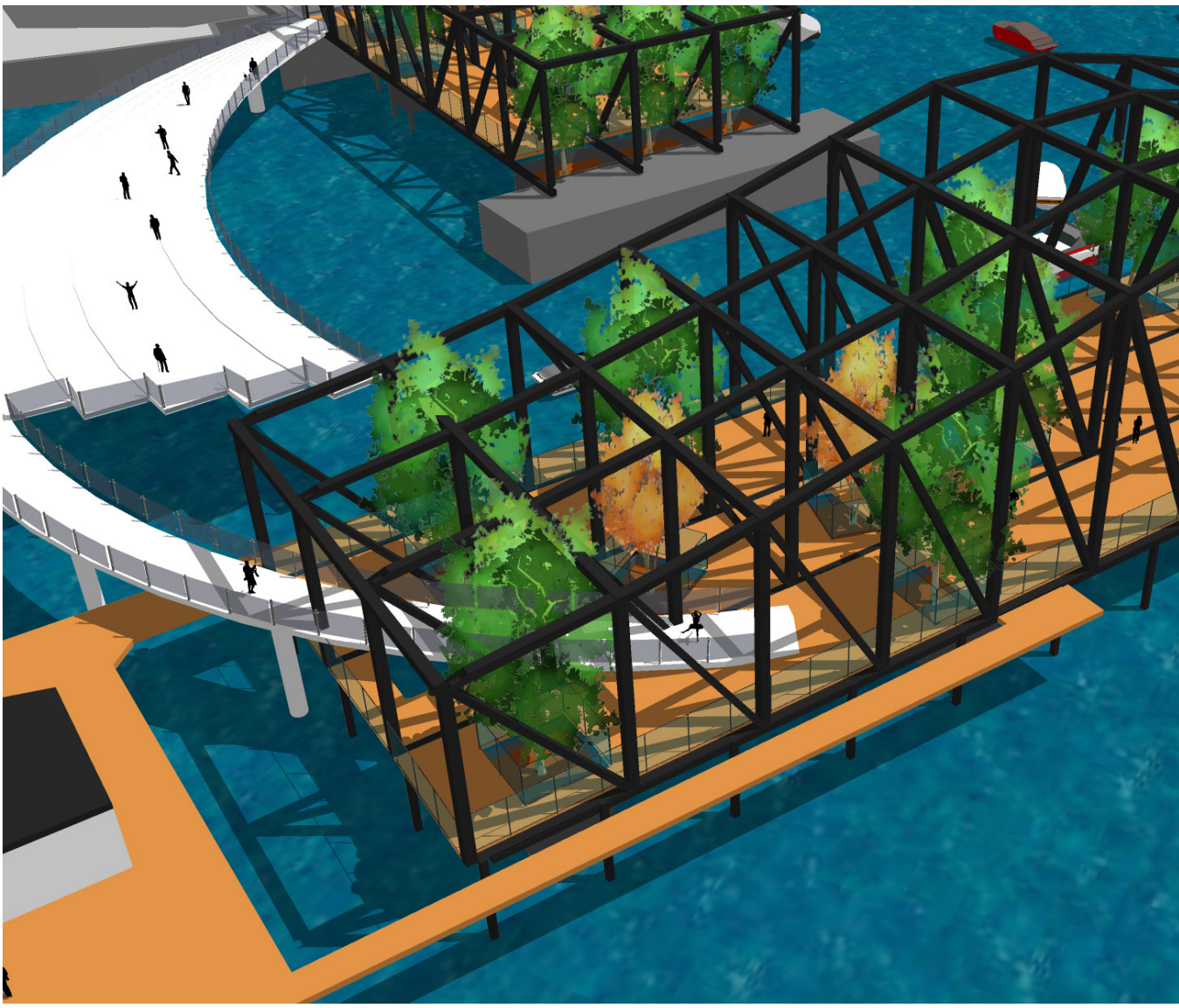
view c



issue: the existing tender's house has fallen into disrepair. the original design has left the bridge and house with no real public access.

opportunity: with the existing bridge rotated the tender's house would be rehabilitated and new connections would provide opportunities for historical education and civic use.

view b



planters

