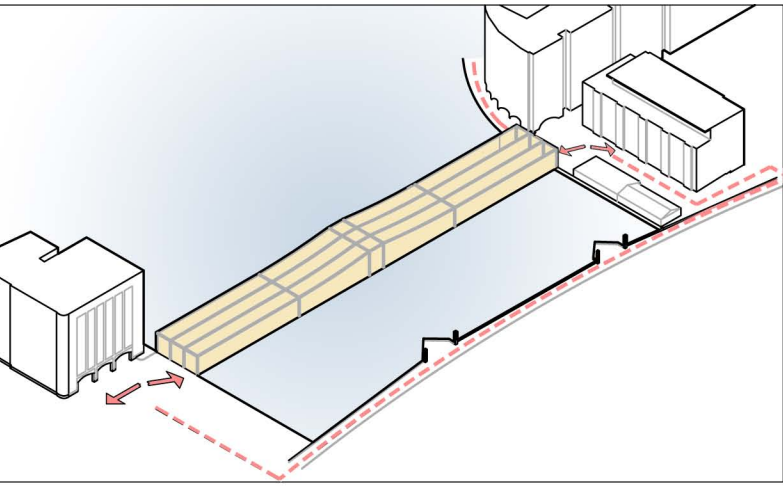
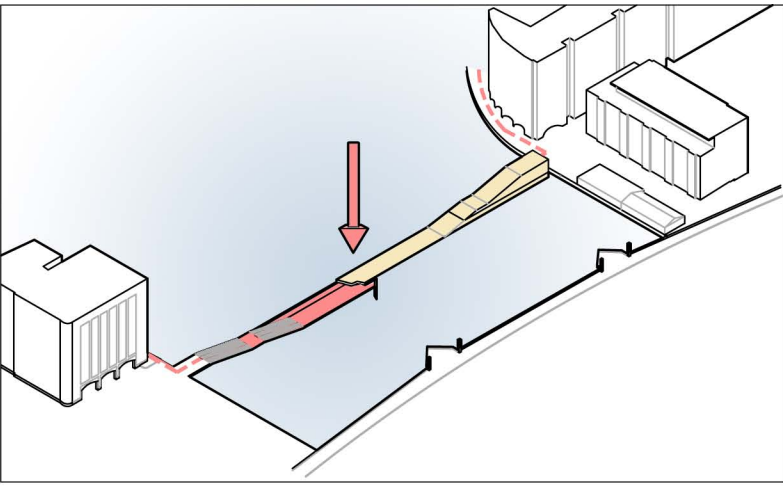


# PRESERVATION + TRANSFORMATION

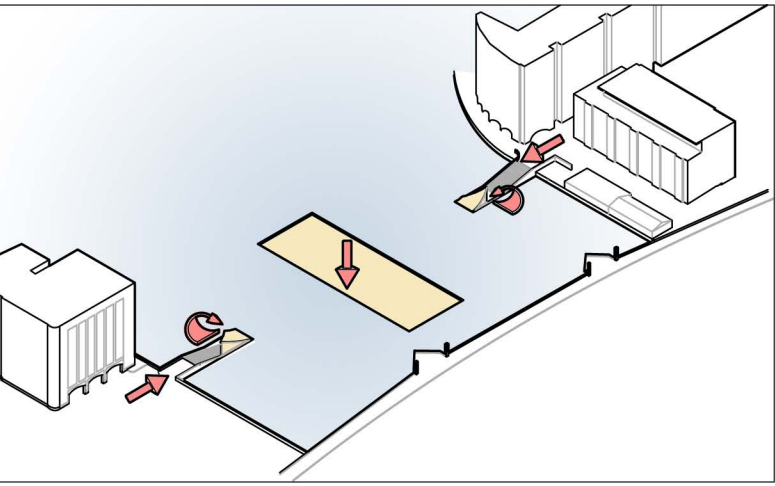
The goal of the project is to preserve the draw bridge segment of the Northern Ave bridge structure while providing a 24 hour uninterrupted pedestrian thru-way. In the process of preserving the bridge, the design tries to over emphasize that this is a new chapter in the bridge's history. By transforming the bridge from a place of transition and speed to a space for rest and function, it becomes a new type of landmark, one who's roll in the community is continuously adapting and changing with time. The new preserved bridge is meant to become new exhibition space for the city - here it can host gala's, events, performances, and other public functions while allowing for Boston's history to always be on display.



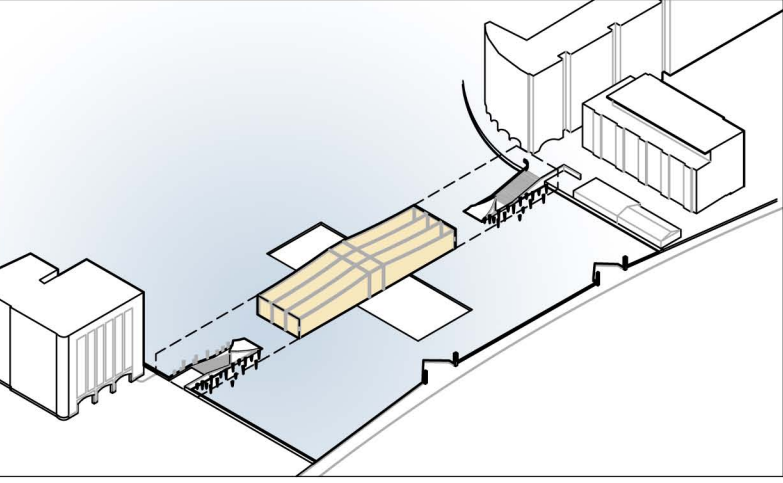
**1. BARRIER**  
The bridge currently serves as a barrier between the North End and Innovation district segments of the Harbor Walk. While it serves as a historical, physical representation of early bridge typology, the bridge can no longer provides its intended function.



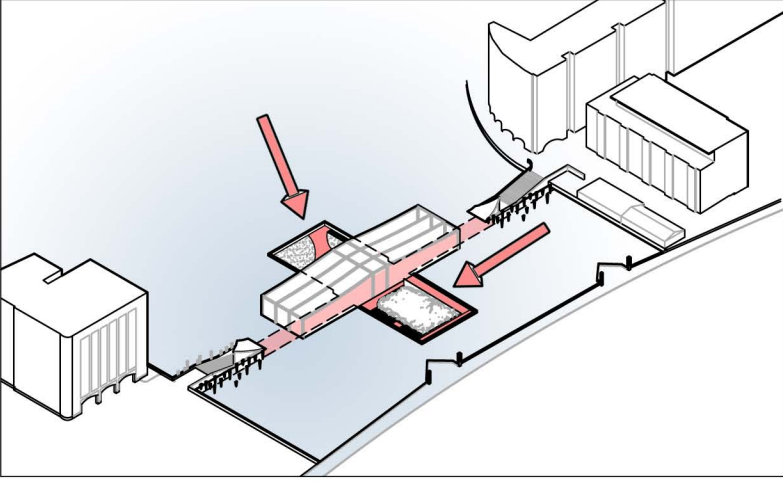
**2. NEW BRIDGE**  
A new bridge would be created as a sunken pedestrian tunnel. This would re-link the ends of the Harbor Walk while remaining uninterrupted by boat traffic in the channel. As tides elevations continue to rise, the tunnel can be expanded to provide a link between these land masses for time to come



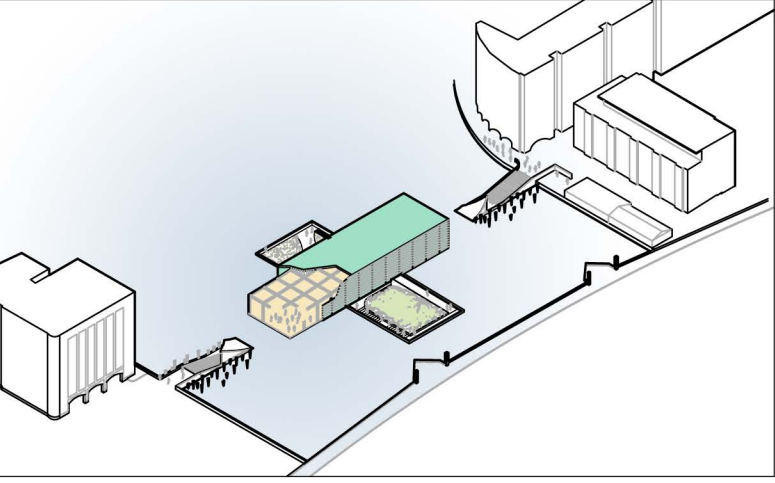
**3. UTILIZATION**  
The existing footprint beneath the rotated draw side of the bridge is captured and transformed into new urban parks - on the south end: a planted bed - on the north: a sunken exterior platform with views into the harbor. In addition, the tunnel ceiling is peeled back to accentuate entrance & bring in light.



**4. ISLAND**  
Both approach ends of the bridge are disassembled, marooning the operational draw segment of the bridge in the channel. The old iron would be reinstalled to form a sculptural, protective fenders for the pedestrian tunnel below as well as a screen for the emergency accessible catwalks.



**5. LINK**  
The pedestrian tunnel is linked vertically with the new urban parks, creating a destination in the middle of the Channel. Additionally this provides light and ventilation into the subterranean space. These parks also serve as a visual connection between the different program elements along the channel edge.



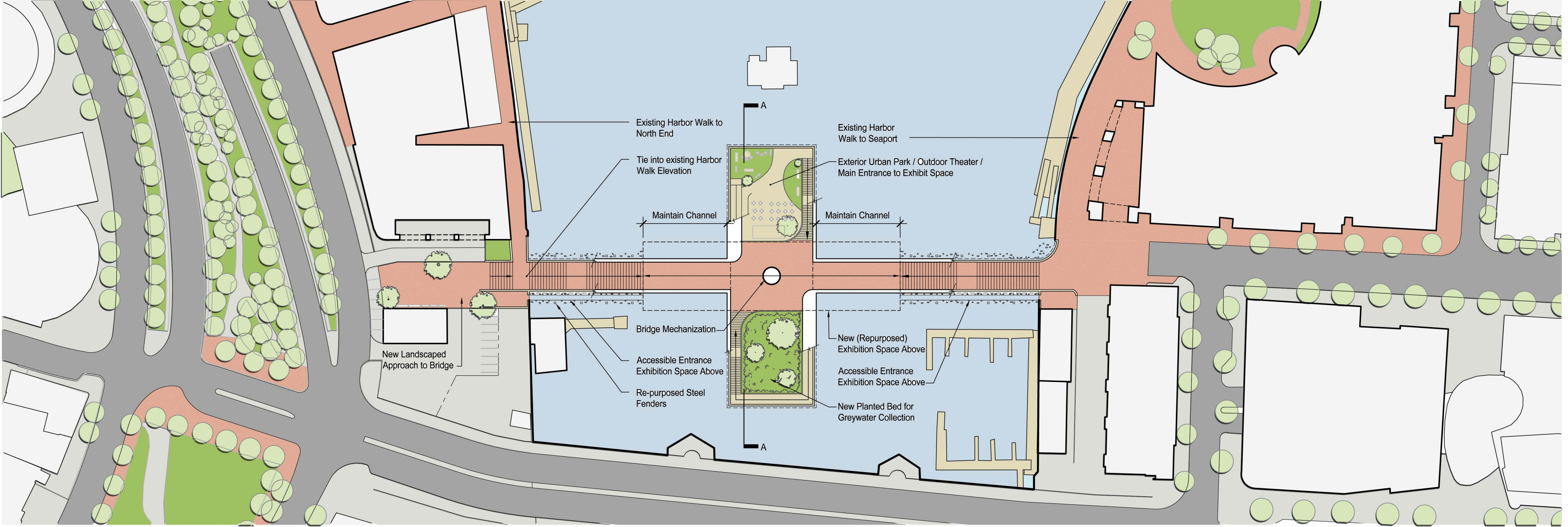
**6. PRESERVE + TRANSFORM**  
The existing diagonal members and top chords are preserved by suspending from a new structural system and left on display within the new double skin enclosure. As the bridge transforms from a place of speed to a place of rest, the bridge elements themselves become the a new type of icon in the city.



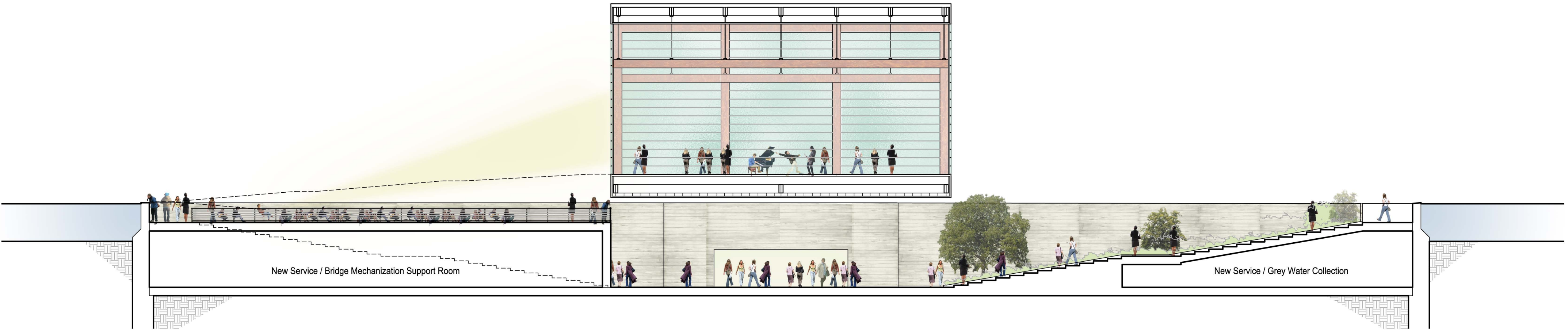
AERIAL NIGHT VIEW OF NEW BRIDGE + CONCOURSE



VIEW OF THE ENTRANCE TO THE CONCOURSE WITH SHROUDED BRIDGE BEYOND (LOOKING WEST)



PLAN AT NEW SUNKEN PEDESTRIAN CONCOURSE



A-A SECTION THRU NEW EXHIBITION SPACE LOOKING EAST