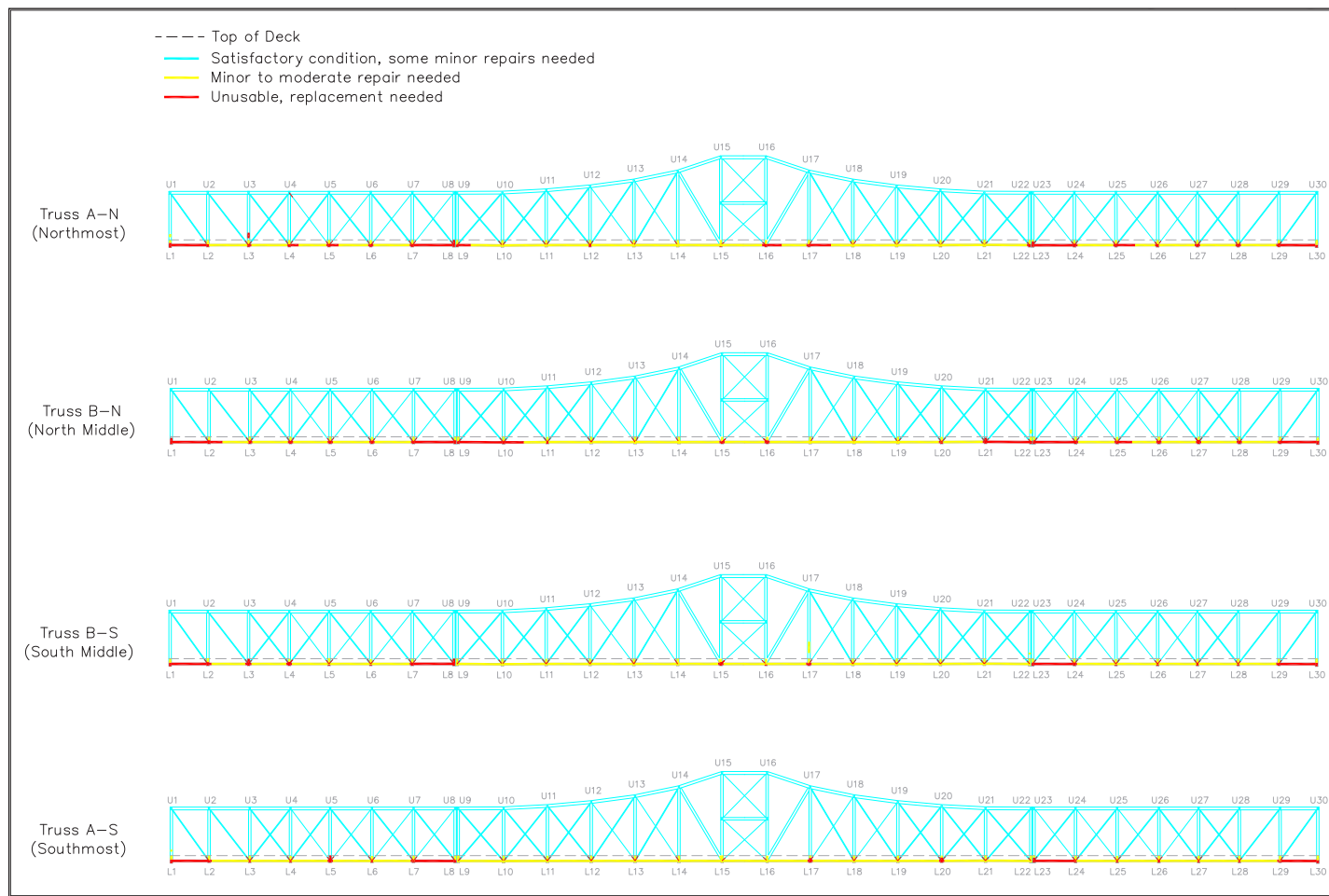
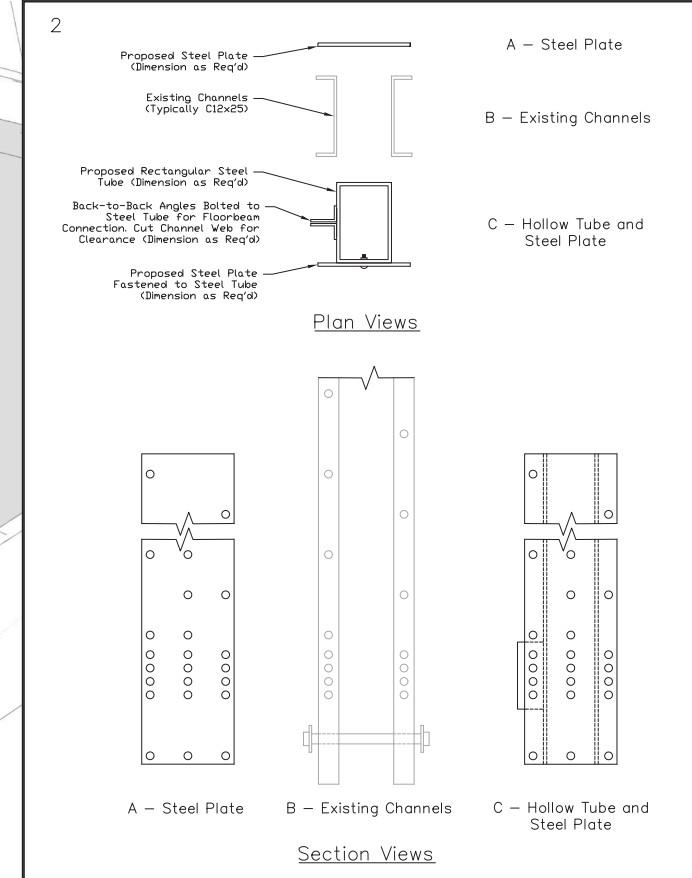


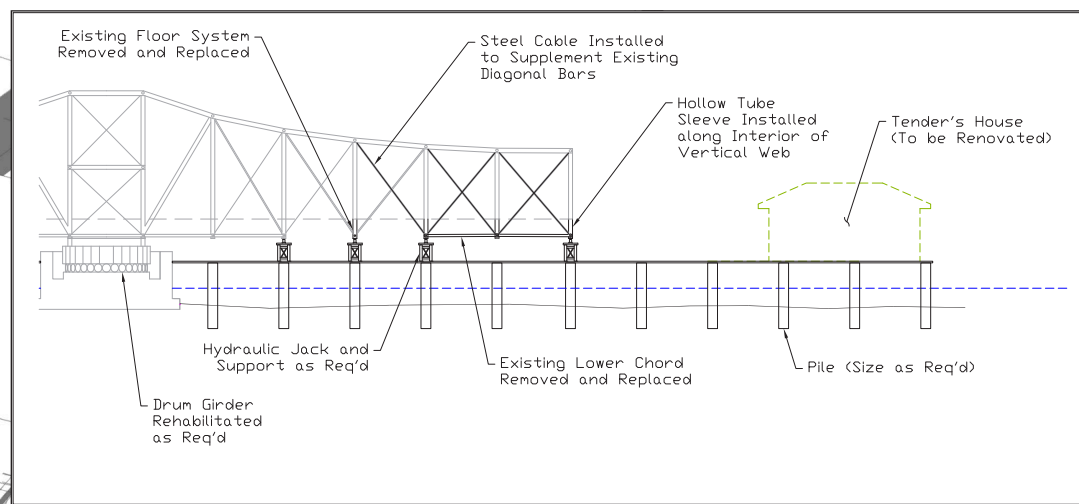
CURRENT CONDITION OF STRUCTURAL MEMBERS
(IN MUCH BETTER CONDITION THAN ORIGINALLY THOUGHT)



PROPOSED BRIDGE STRUCTURE MODIFICATIONS:
(STRENGTHENING SLEEVE IN VERTICALS CONNECTS TO NEW FLOORBEAMS & BOTTOM CHORD)



REPAIRING THE BRIDGE “IN PLACE”
(DISMANTLING & REMOVING THE BRIDGE FOR RESTORATION WILL CAUSE IRREPARABLE DAMAGE)



OUR VISION FOR STEAMPUNK GATEWAY

We envision that the bridge will actually be telling the story of the ‘living’ history of Boston’s dynamic past to its present and future by:

- 1) Honoring the bridge’s history and restoring it in place with its original swing functionality so it maintains its reputation of being the maritime ‘gateway’ to the harbor.
- 2) Improving mobility of people from downtown Boston/Financial District to the Seaport’s Innovation District including a route for Boston’s Harborwalk and creating not just a pathway for movement, but an incredible destination for public events, activities and festivals. Bridge will be primarily for boots, bikes, buses & emergency vehicles.
- 3) Steampunk ethos of integrating the new with the old, repurposing and reimagination. Integrating authentic period objects that are relevant to the history of the bridge and area and creating past/present/future hi-tech observation scopes (sponsored by businesses) that run along the span of the bridge.

RETAIL FOOD TRAIN CARS

We plan to have a varied set of food “train cars” that will service the bridge, encompassing many cuisines of the area. Trains regularly went across the bridge, with goods for export.



ROWING CENTER FOR HISTORIC LONGBOATS & DRAGON BOATS

STEAMPUNK OBSERVATION VIEWING SCOPES



WALKWAY TO TENDER HOUSE

THE NEW TENDERS’ HOUSE

The tenders’ house will be primarily used for restaurant/music/retail etc. experiences with ‘virtual’ & physical connections to the bridge. It will also function as a real tenders’ house, containing the equipment to control the bridge and quarters for the tender on duty. (Restored air pumps, tanks, & piping that operated the bridge)

THE FIREHOUSE MARITIME MUSEUM

Rebuild the old Fireboat Station, that collapsed into The Harbor in 1964.

The Working Waterfront Boat Basin: a home for historic Boston working vessels including a restored historic tug; old tug converted to play structure; lobster boat with lobster pots to pull, fishing boat, surf rescue boat, and pilot boat.

The museum will tell the story of the people and equipment that made the port work: shiphandling tugs, types of ships, cranes, longshoremen, tides and movable bridges. It will also have a local focus on Boston’s harbors, bridges, and city growth.

A Gift Shop will offer for sale, books, charts, models and posters. The Snack Bar, overlooking the museum vessels, will feature seashore-themed fare. A kiosk will be created, that features information about the existing Harbor Islands State Park. Artists will be invited to create unique graphics for the LED displays after hours.