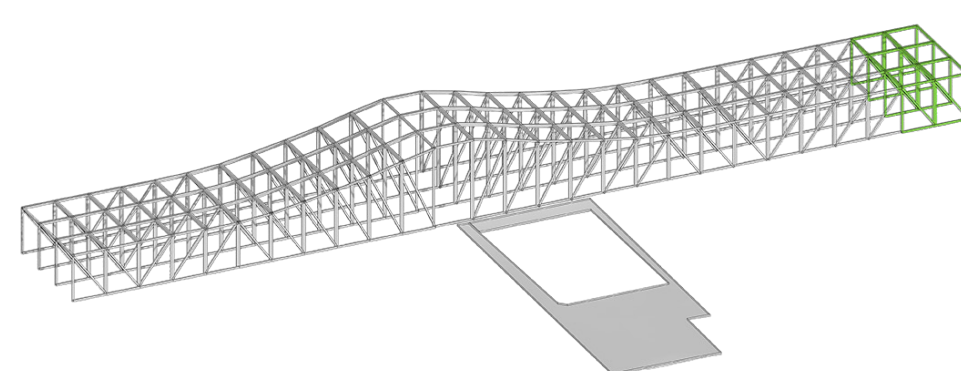
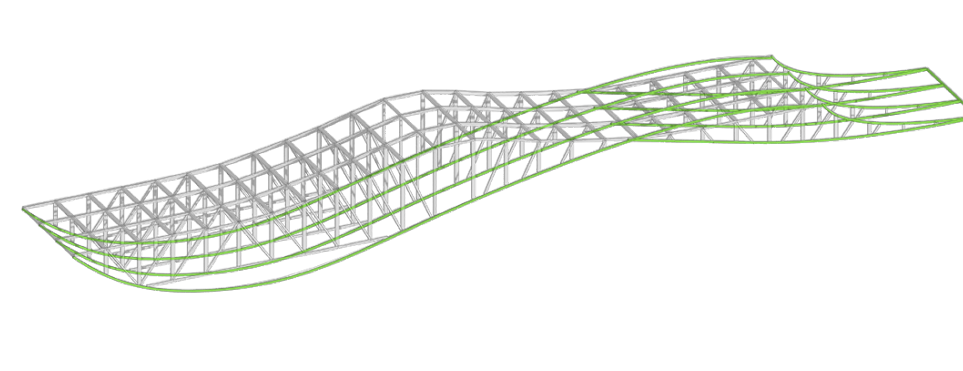


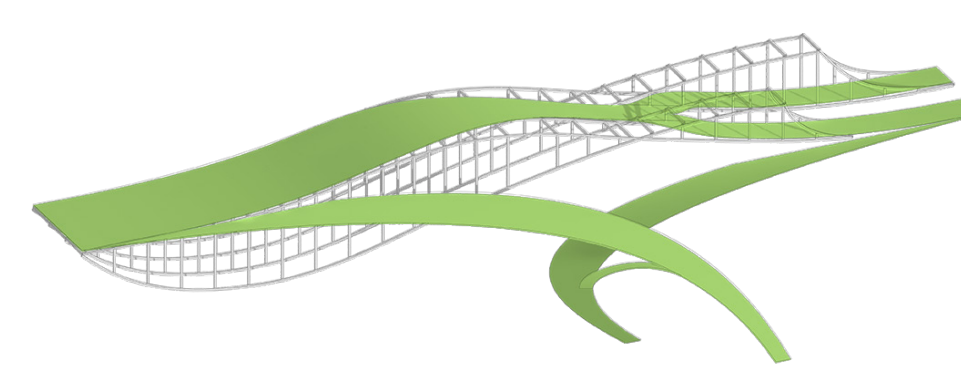
EXISTING BRIDGE AND OPERATOR'S HOUSE



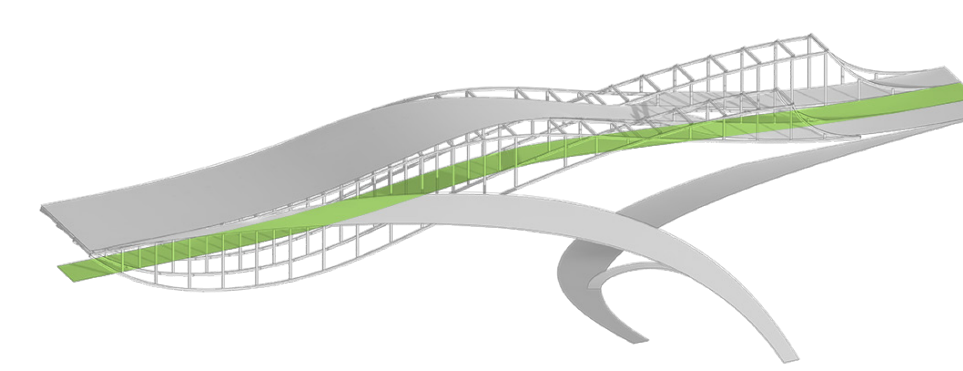
REDISTRIBUTE STRUCTURAL GRIDS TO CREATE ASYMMETRICAL FORM



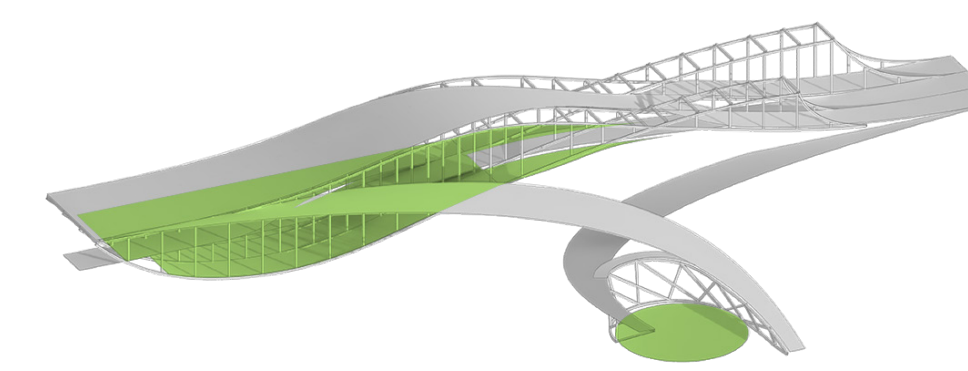
CREATE CURVING, FLUID FORM REMINISCENT OF THE CHANNEL'S WATER



CREATE GREEN ROOFS THAT LINK THE GREEN-WAY WITH THE CHANNEL'S WATER, ULTIMATELY CREATING A THREE DIMENSIONAL LOOP



CREATE UNIFYING CENTRAL CIRCULATION PATH



INSERT INTERIOR GALLERY AND EXTERIOR STAGE WITHIN THE VOID CREATED BY THE MULTIPLE CIRCULATION PATHS

INFINITE GREEN LOOP

Northern Bridge has been in a gradual decay ever since the completion of its neighboring new bridge which relieved it of most of its duty getting people across the river. However, in my opinion, some features of the Northern Bridge have withstood the test of time: its awesome frame structure; triangulated relation between the river banks and the island and the convenient location to literary bridge the gaps between the Green way and "museum land" have become irreplaceable.

Bostonians have been blessed with abundance of aquatic lifestyles but never have had access to an over-the-water experience.

This project creates an opportunity to broaden the definition of aquatic lifestyle. Similar to the Emerald Necklace concept of Boston, this project extends and connects, while taking it a step further: the bridge acts as a branch extending from the existing green way, hovering over the river, and creates an infinite loop through its 3 dimensional typological configuration.

This design creates 4 intertwining circulations that incorporate vehicular, pedestrian and marine traffic as well as civic and lifestyle functions. The first one extends the green way and loops it into an infinite circle; the second connects the green way with the museum land and the third one leads up to an interior gallery space; boats and ships passing under the bridge and interacting with the hovering circulations completes the fabric as the fourth circulation.

