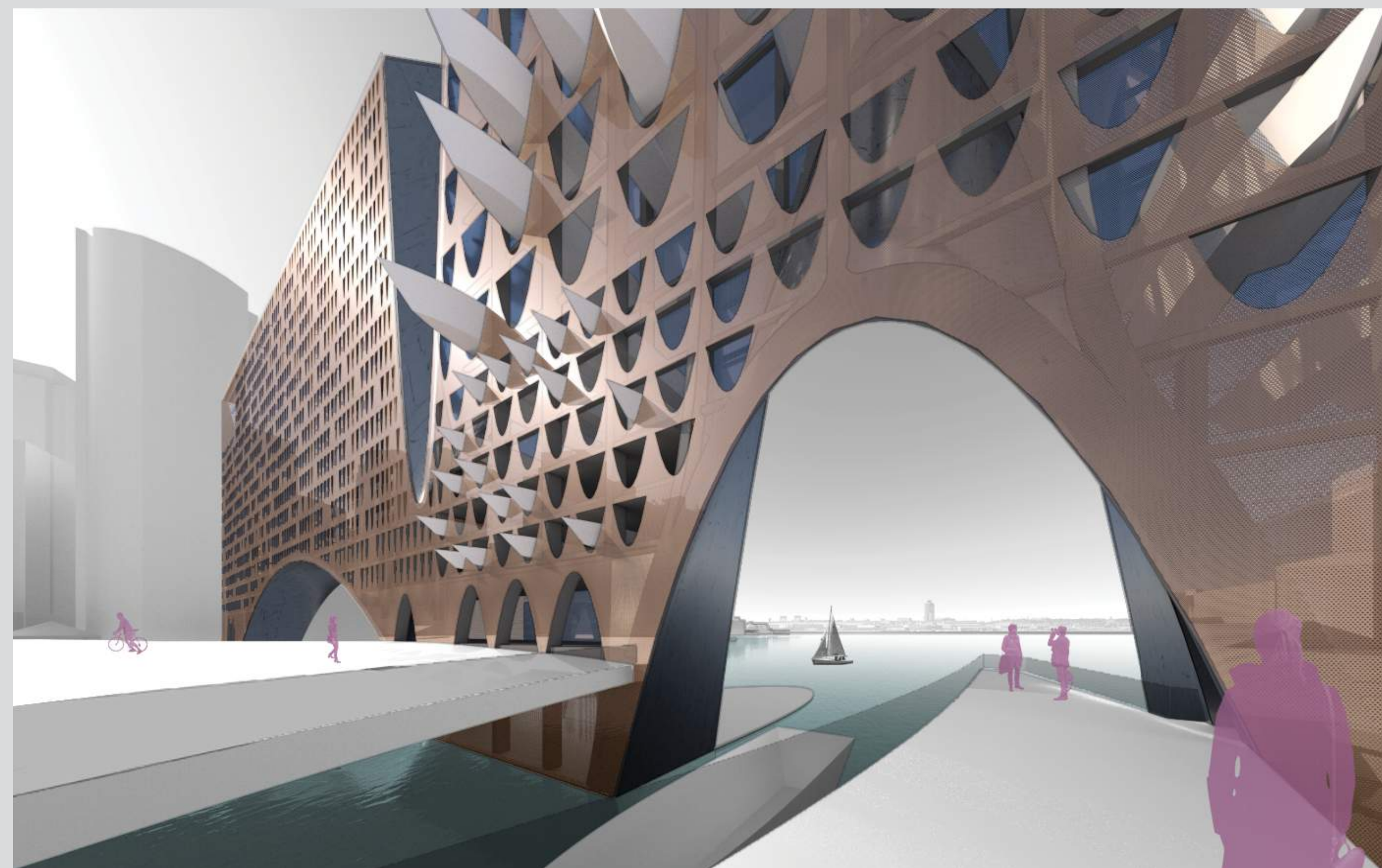
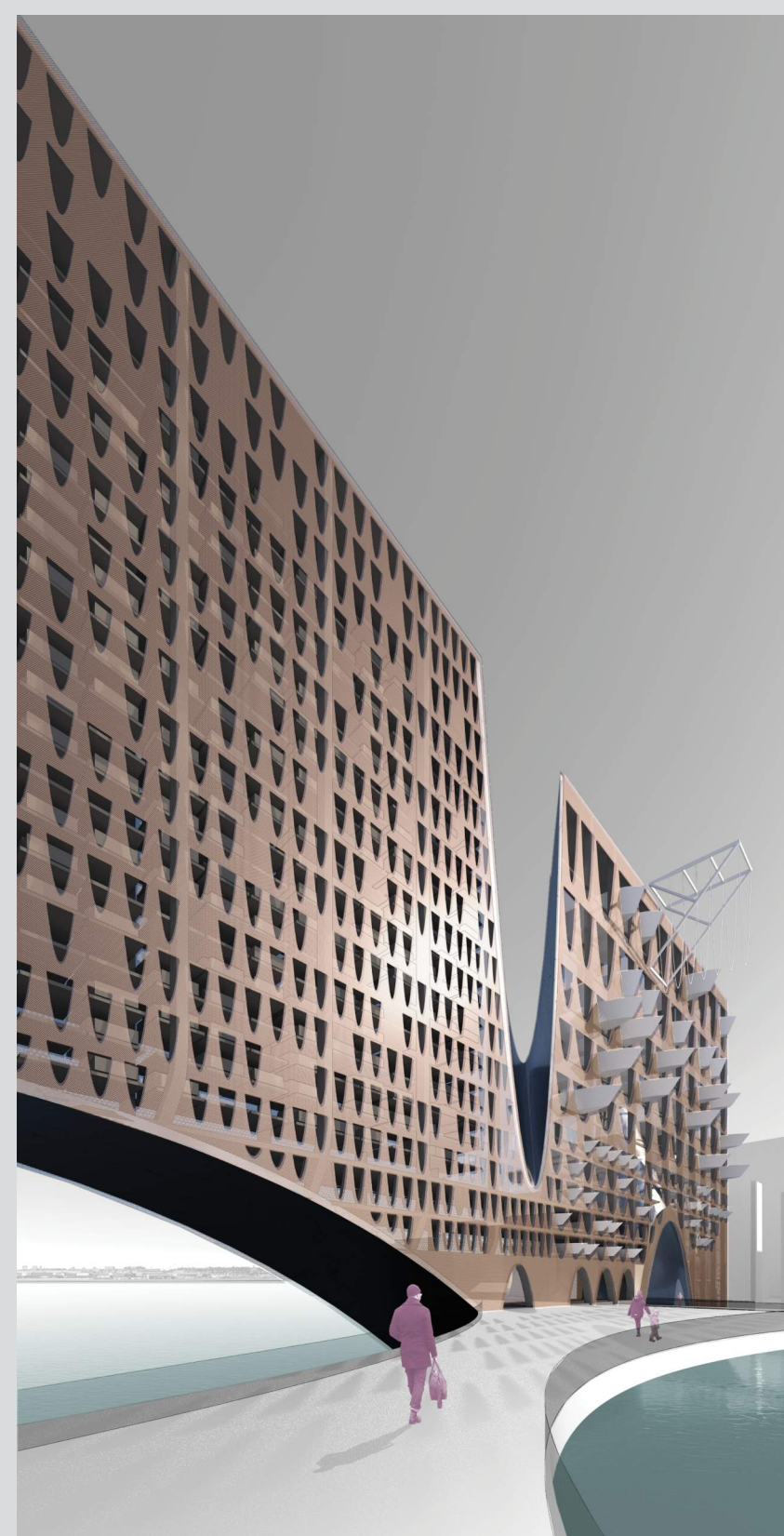


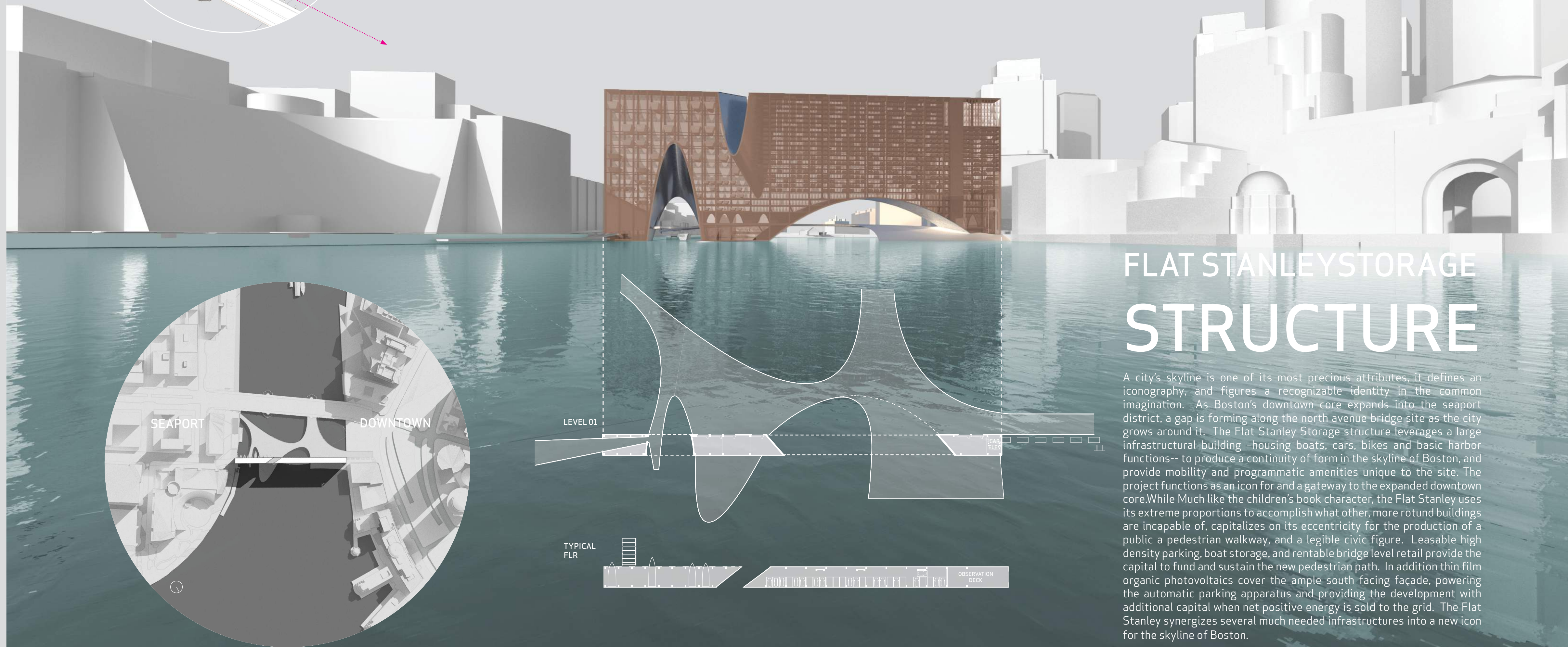
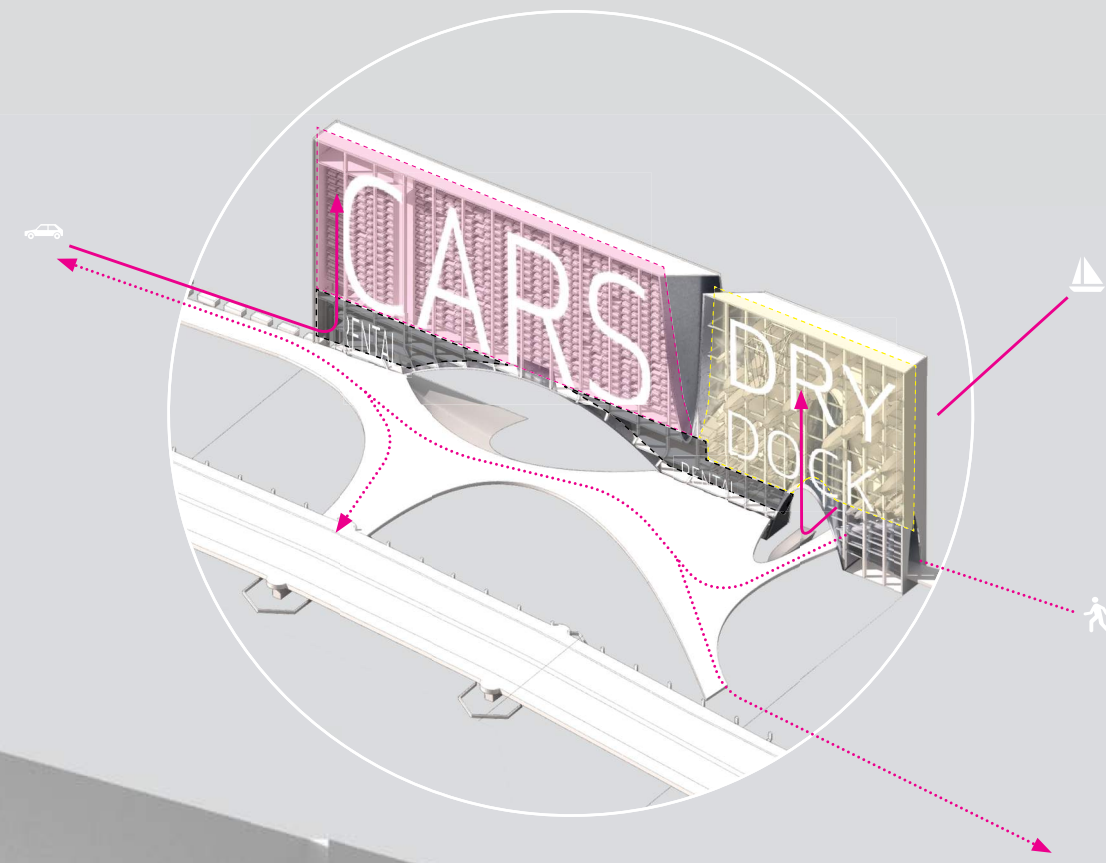
SEAPORT ENTRANCE



PUBLIC PLAZA, SHOPPING, & VIEW TO HARBOR



PEDESTRIAN BRIDGE & BOAT STORAGE



# FLAT STANLEY STORAGE STRUCTURE

A city's skyline is one of its most precious attributes, it defines an iconography, and figures a recognizable identity in the common imagination. As Boston's downtown core expands into the seaport district, a gap is forming along the north avenue bridge site as the city grows around it. The Flat Stanley Storage structure leverages a large infrastructural building -housing boats, cars, bikes and basic harbor functions-- to produce a continuity of form in the skyline of Boston, and provide mobility and programmatic amenities unique to the site. The project functions as an icon for and a gateway to the expanded downtown core. While Much like the children's book character, the Flat Stanley uses its extreme proportions to accomplish what other, more rotund buildings are incapable of, capitalizes on its eccentricity for the production of a public a pedestrian walkway, and a legible civic figure. Leasable high density parking, boat storage, and rentable bridge level retail provide the capital to fund and sustain the new pedestrian path. In addition thin film organic photovoltaics cover the ample south facing façade, powering the automatic parking apparatus and providing the development with additional capital when net positive energy is sold to the grid. The Flat Stanley synergizes several much needed infrastructures into a new icon for the skyline of Boston.

